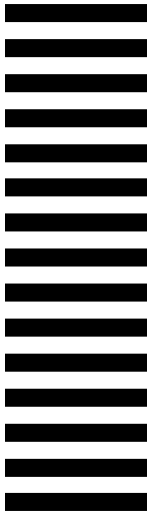
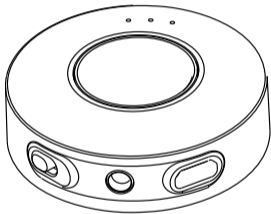


Dual Bluetooth® Transmitter



Yours
by *audiophony*®



BT2xE

WIRELESS

USER GUIDE

10413 - Version 1 - 12-2015

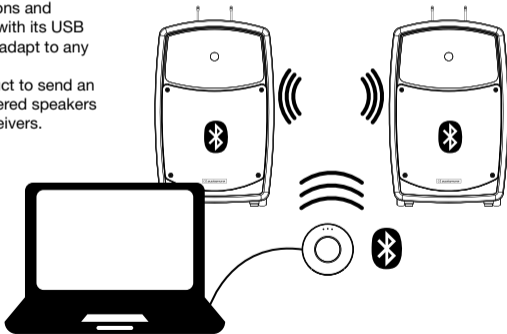
1 - Overview

BT2xE is a light, compact and easy-to-use dual Bluetooth transmitter.

It is easily set up for fixed or nomad installations thanks to its USB port and built-in battery, to connect and play the same audio source via two Bluetooth-compatible speakers.

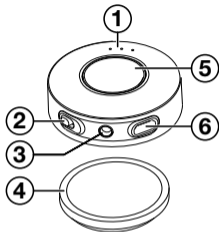
The last-gen «aptX-LL» codec delivers a perfect sound/video synchronisation at an almost inexistent latency. Its compact format and magnetic base allow discreet installations and simplified use. It is supplied with its USB cable and audio adapters to adapt to any kind of equipment.

Example: it is the ideal product to send an audio signal to two self-powered speakers equipped with Bluetooth receivers.



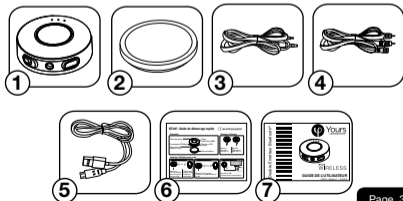
2 - Description

- 1 - Indicator LEDs
- 2 - DC / Battery switch
- 3 - Jack 3.5 mm audio plug
- 4 - Magnetic base
- 5 - Multi-function button
- 6 - Micro USB plug (Charge)



3 - Package contents

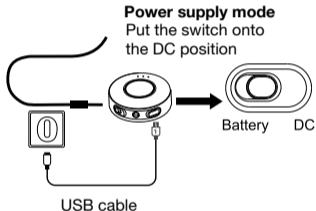
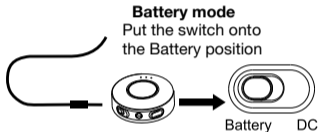
- 1 - Your BT2xE
- 2 - Its magnetic base
- 3 - Male mini Jack 3,5 mm / male mini Jack 3,5 mm audio cable
- 4 - Female mini Jack 3,5 mm femelle / RCA audio cable
- 5 - USB power cord to charge the battery
- 6 - Quick start guide
- 7 - User guide



4 - «Battery / DC» modes

Your BT2xE can be used in different ways.

- 1 - It can be battery-operated (e.g. when used with a cell phone).
- 2 - Connected to an external power supply unit (e.g. when connected to a permanent installation).



Note: USB ports of some televisions and laptops are not reliable.
We strongly advise to use a mains charger when using DC mode.

4 - Use

4.1 - Turning ON/OFF your device



Activation

Hold Multifunction button until the Blue LED flashes for 1 second

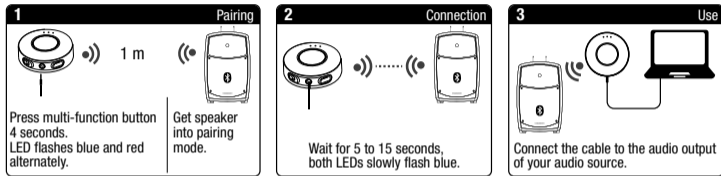


Deactivation

Hold Multifunction button until the Red LED flashes for 1 second

Note: Your BT2XE automatically enters pairing mode upon activation if no connection has been detected.

4.2 - Connection and pairing



Step 1: Activate the pairing mode by pushing the multi-function button 4 seconds.

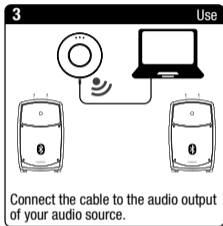
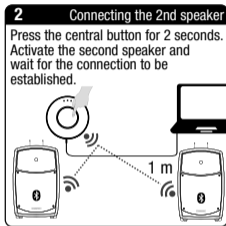
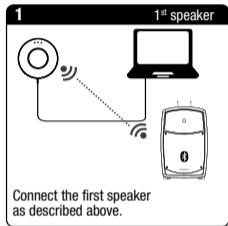
Step 2: Activate the pairing mode of your Bluetooth® receiver.

Step 3: Get the two units within a 1-meter radius and wait for them to connect automatically.

Step 4: Connect your BT2xE to an audio source such as a cell phone, laptop, etc.

Reconnection: Please make sure your audio source is activated. Connect the Jack 3.5 mm cable to your BT2xE and wait 2 to 15 seconds.

4.2 - Connection and pairing to two devices



Step 1: Connect to the first device as described in paragraph 4.1.

Step 2: Hold the multi-function button for 7 seconds, your BT2xE will then enter pairing mode again.

Step 3: Activate the pairing mode of your second Bluetooth® receiver and wait for them to connect automatically.

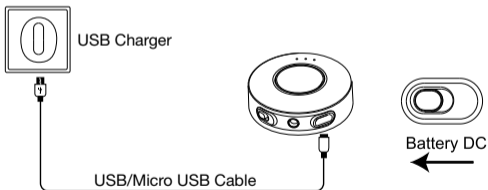
Note: Your BT2xE can only use SBC mode when connected to two devices.

5 - Charging the battery

The LED will flash red to indicate the battery must be charged. The charging process lasts approximately 3 hours. Enter Battery mode before charging your device. The LED will light red during the charging process, and lights off as soon as it is completed.

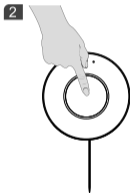
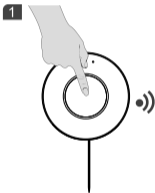
Requirements:

Use the USB/Micro USB cable supplied to connect your BT2xE to a wall-mounted charger, car charger, etc. delivering a voltage of 5V/500mA-1A or one of the USB ports of your computer. Most cell phones chargers also are compatible with your device.



6 - Reset

You may be required to reset your device in case of failures or errors. All pairing information will be lost in such cases.



- Step 1:** Activate the peering mode of your BT2xE by turning it on (please make sure there are no Bluetooth® receivers activated nearby).
- Step 2:** Double click the multi-function button. The blue and red LEDs will light up for 1 second.
- Step 3:** Restart your BT2xE.

7 - LED indications

Status	Indication
Activation	Blue LED for 1 second
Deactivation	Red LED for 1 second
Pairing mode	Blue and red LED flashes
Pairing process successful	Blue LED for 3 second
Connected via SBC codec	Blue LED flashes every 5 seconds
Connected via aptX codec	Blue LED flashes twice every 5 seconds
Connected via aptX-LL codec	Blue LED flashes 3 times every 5 seconds
Connected via FastStream codec	Blue LED flashes 4 times every 5 seconds
Disconnected	Blue LED flashes every 10 seconds
Reset	Blue and red LEDs for 1 second
Low battery	Red LED flashes twice every second

8 - Technical specifications

- Bluetooth® 4.1
- Bluetooth® profile: A2DP
- Audio codecs: aptX-LL, aptX, SBS, FastStream
- Operating range: Class 2, 10 meters
- Allows you to connect to two devices simultaneously
- Operational battery life: Up to 8 hours
- Battery life in stand-by mode: Up to 120 hours
- Batterie : Rechargeable, Li-Po, 250mAh
- Weight: Housing: 23g / Base: 7g
- Dimensions : 48 x 48 x 15 mm

Note : Battery durations aforementioned can change depending on the Bluetooth® devices connected to your BT2xE, settings and surroundings.



The Bluetooth® logo and trademark are owned by The Bluetooth SIG, inc.



Recycling your device

As HITMUSIC is really involved in the environmental cause, we only commercialise clean, ROHS compliant products.

Please take your product to a collection point designated by local authorities if it has reached its end of life to ensure it is recycled in a manner that protects human health and the environment, and conserving natural resources.



Sound levels

Our audio solutions deliver important sound pressure levels (SPL) that can be harmful to human health when exposed during long periods.

Please do not stay in close proximity of operating speakers.

This product is compliant with the European norms **99/5/EC - 2004/108/EC** and norms:

LVD : EN60950-1:2006+A11:2009+A1:2010+A12:2011

EMC : EN301489-17:V2.1.1:2009 + EN301489-1:V1.8.1:2008

RADIO : EN300328:V1.7.1:2006

EMF : EN62479:2010



Because AUDIOPHONY® takes the utmost care in its products to make sure you only get the best possible quality, our products are subjects to modifications without prior notice. That is why technical specifications and the products physical configuration might differ from the illustration.

Make sure you get the latest news and updates about the AUDIOPHONY® products on www.audiophony.com

AUDIOPHONY® is a trademark of **HITMUSIC SA** - P.A Cahors Sud - En teste - 46230 FONTANES - FRANCE