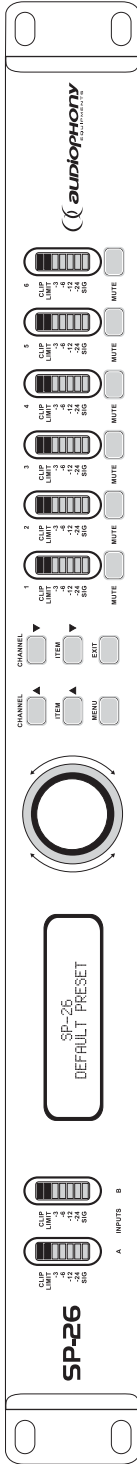


2-in 6-out speaker processor



SP-26

1 - Safety information

Important safety information



This unit is intended for indoor use only. Do not use it in a wet, or extremely cold/hot locations. Failure to follow these safety instructions could result in fire, electric shock, injury, or damage to this product or other property.



This product contains non-isolated electrical components. Do not undertake any maintenance operation when it is switched on as it may result in electric shock.



Any maintenance procedure must be performed by a CONTEST authorised technical service. Basic cleaning operations must thoroughly follow our safety instructions.



CAUTION
RISK OF ELECTRIC SHOCK
DO NOT OPEN



WARNING : This unit contains no user-serviceable parts. Do not open the housing or attempt any maintenance by yourself. In the unlikely even your unit may require service, please contact your nearest dealer. In order to avoid any electrical malfunction, please do not use any multi-socket, power cord extension or connecting system without making sure they are perfectly isolated and present no defect.



Risk of electrocution

To prevent the hazard of electric shocks, do not use extension cords, multi-socket or any other connection system without making sure metal parts completely are out of reach.



Sound levels

Our audio solutions deliver important sound pressure levels (SPL) that can be harmful to human health when exposed during long periods. Please do not stay in close proximity of operating speakers.



Recycling your device

- As HITMUSIC is really involved in the environmental cause, we only commercialise clean, ROHS compliant products.
- When this product reaches its end of life, take it to a collection point designated by local authorities. The separate collection and recycling of your product at the time of disposal will help conserve natural resources and ensure that it is recycled in a manner that protects human health and the environment.

Symbols used



This symbol signals an important safety precaution.



The CAUTION symbol signals a risk of product deterioration.



The WARNING symbol signals a risk to the user's physical integrity. The product may also be damaged.

Instructions and recommendations

1 - Please read carefully :

We strongly recommend to read carefully and understand the safety instructions before attempting to operate this unit.

2 - Please keep this manual :

We strongly recommend to keep this manual with the unit for future reference.

3 - Operate carefully this product :

We strongly recommend to take into consideration every safety instruction.

4 - Follow the instructions:

Please carefully follow each safety instruction to avoid any physical harm or property damage.

5 - Avoid water and wet locations :

Do not use this product in rain, or near washbasins or other wet locations.

6 - Installation :



We strongly encourage you to only use a fixation system or support recommended by the manufacturer or supplied with this product. Carefully follow the installation instructions and use the adequate tools.

Always ensure this unit is firmly fixed to avoid

vibration and slipping while operating as it may result in physical injury.

7 - Ceiling or wall installation :

Please contact your local dealer before attempting any ceiling or wall installation.

8 - Ventilation :



The cooling vents ensure a safe use of this product, and avoid any overheating risk.

Do not obstruct or cover these vents as it may result in overheating and potential physical injury or product damage. This product should never be operated in a closed non-ventilated area such as a flight case or a rack, unless cooling vents are provided for the purpose .

9 - Heat exposure :

Sustained contact or proximity with warm surfaces may cause overheating and product damages. Please keep this product away from any heat source such as a heaters, amplifiers, hot plates, etc...

10 - Electric power supply :

This product can only be operated according to a very specific voltage. These information are specified on the label located at the rear of the product.

11 - Power cords protection:

Power-supply cords should be routed so that they are not likely to be walked on or pinched by items placed upon or against them, paying particular attention to cords at lugs, convenience receptacles and the point where they exit from the fixture.



12 - Cleaning precautions :



Unplug the product before attempting any cleaning operation. This product should be cleaned only with accessories recommended by the manufacturer. Use a damp cloth to clean the surface. Do not wash this product.

13 - Long periods of non use :

Disconnect the unit's main power during long periods of non use.

14 - Liquids or objects penetration :

Do not let any object penetrate this product as it may result in electric shock or fire.

Never spill any liquid on this product as it may infiltrate the electronic components and result in electric shock or fire.

15 - This product should be serviced when :



Please contact the qualified service personnel if :

- The power cord or the plug has been damaged.
- Objects have fallen or liquid has been spilled into the appliance.
- The appliance has been exposed to rain or water.
- The product does not appear to operate normally.
- The product has been damaged.

16 - Inspection/maintenance :



Please do not attempt any inspection or maintenance by yourself. Refer all servicing to qualified personnel.

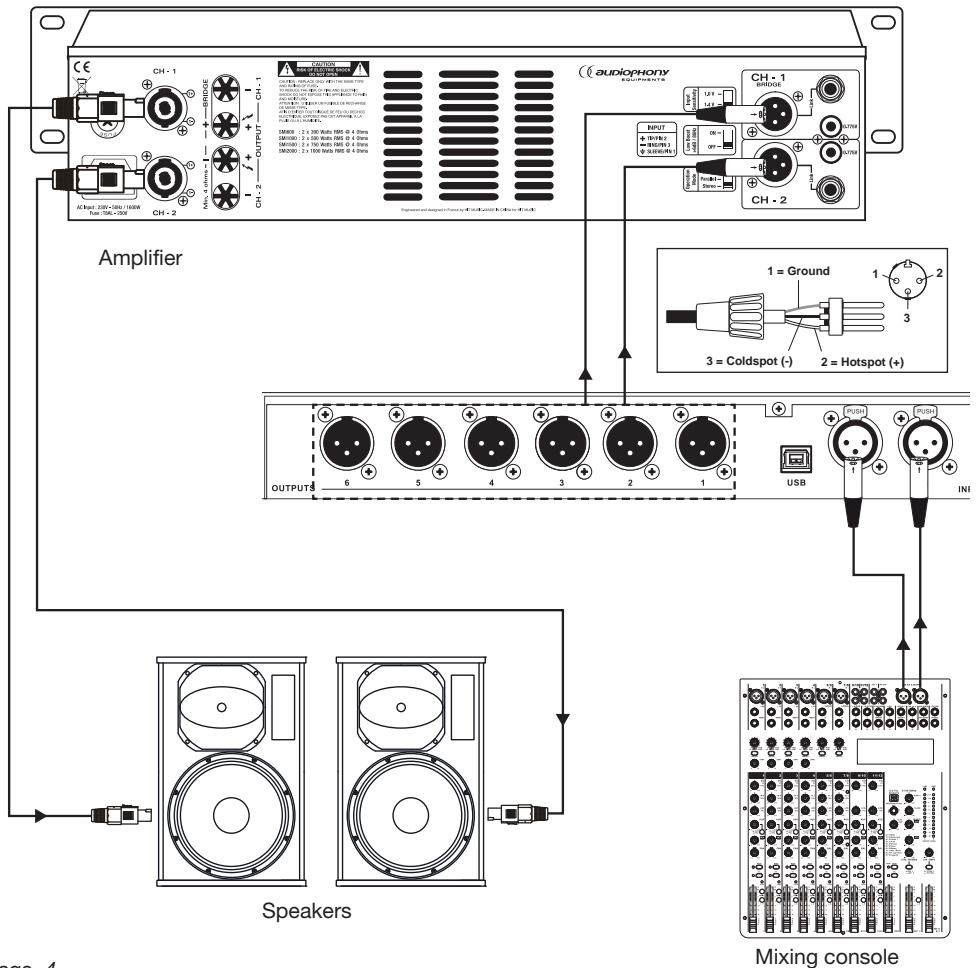
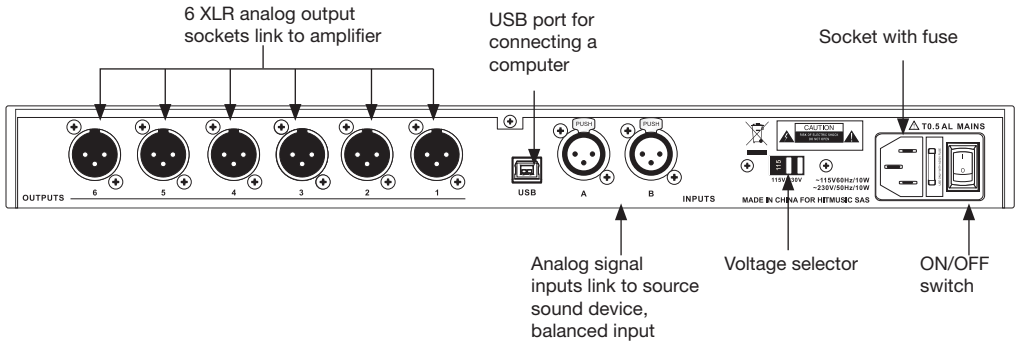
17 - Operating environment :



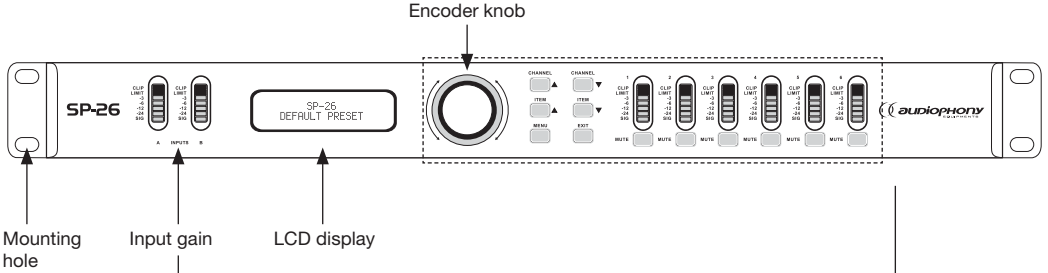
Ambient temperature and humidity: +5 - +35°C, relative humidity must be less than 85% (when cooling vents are not obstructed).

Do not operate this product in a non-ventilated, very humid or warm place.

2 - Back panel

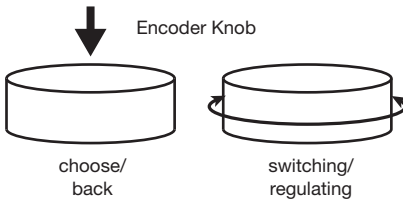
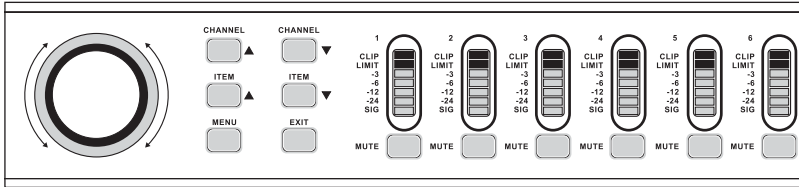


3 - Front panel



CLIP	When the input signal overload lights
LIMIT	When the input signal reaches a peak lights
-3	Indicates the input signal level
-6	
-12	
-24	
SIG	When the signal input lights

Control panel

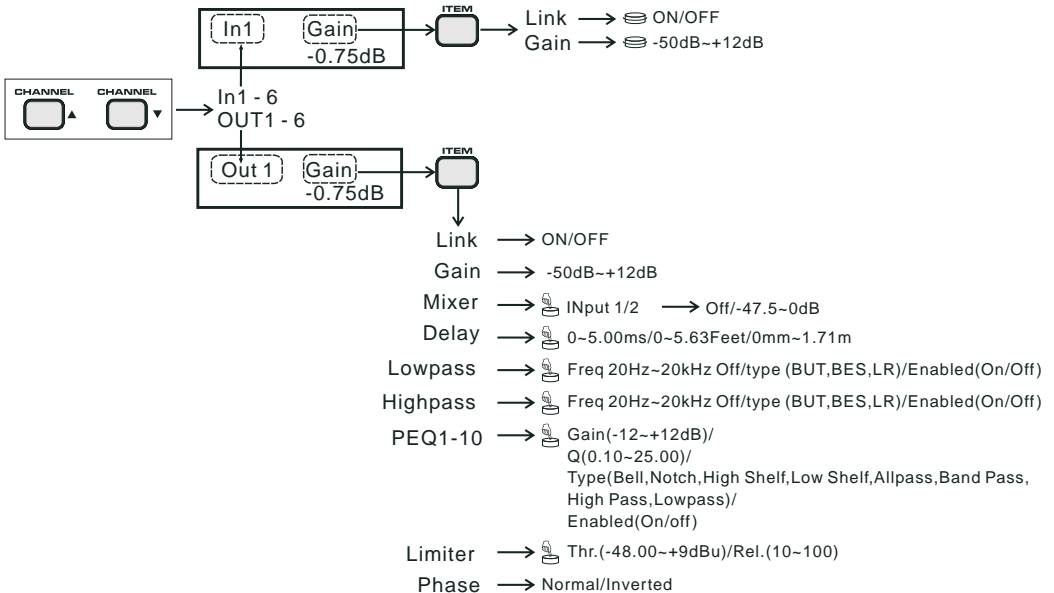
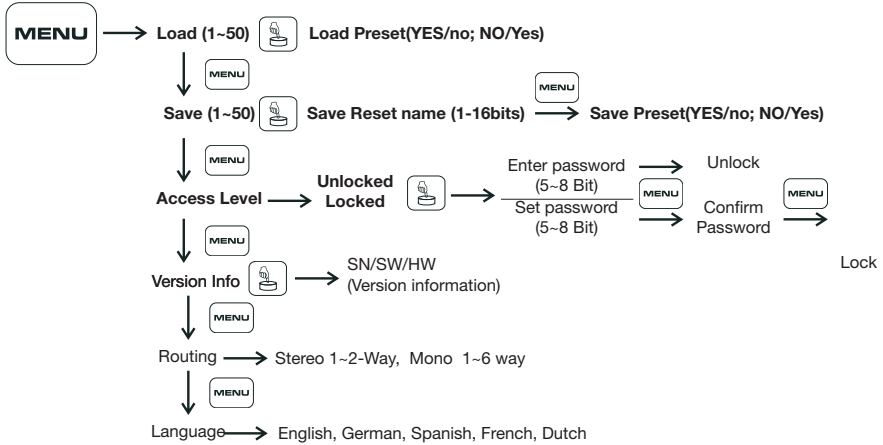
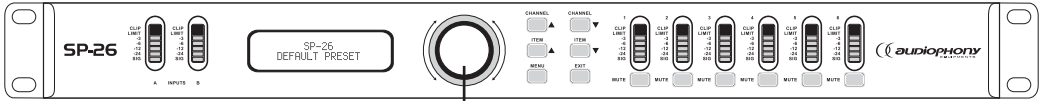


Channel Up	Up channel switching
Channel Down	Down channel switching
Item UP	Up value regulating
Item DOWV	Down value regulating
Mute	Back main mute
Exit	Stop, exit the pretty value
MUTE 1-6	Mute switching 1-6

Channels 1-6 display

CLIP	When the output signal overload lights
LIMIT	When the output signal reaches a peak lights
-3	Indicates the level of the output signal
-6	
-12	
-24	
SIG	When the signal input lights

4 - DSP instructions



5 - Software instruction

Instructions of Computer Software

System Requirements

1. CPU: above Pentium 3
2. RAM: above 512MB
3. Hard Disk : above 500MB
4. Operating System: Windows XP

Install and uninstall

1.Install

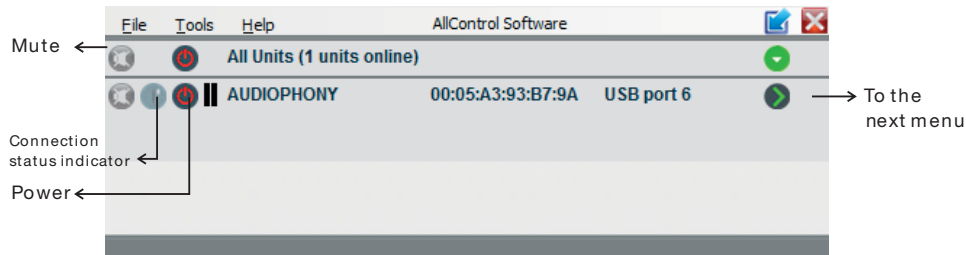
Insert the management system install CD, select the management installer : AllControl Setup.exe, start the installation with double click, setup step by step according to the system hints.

2.Uninstall

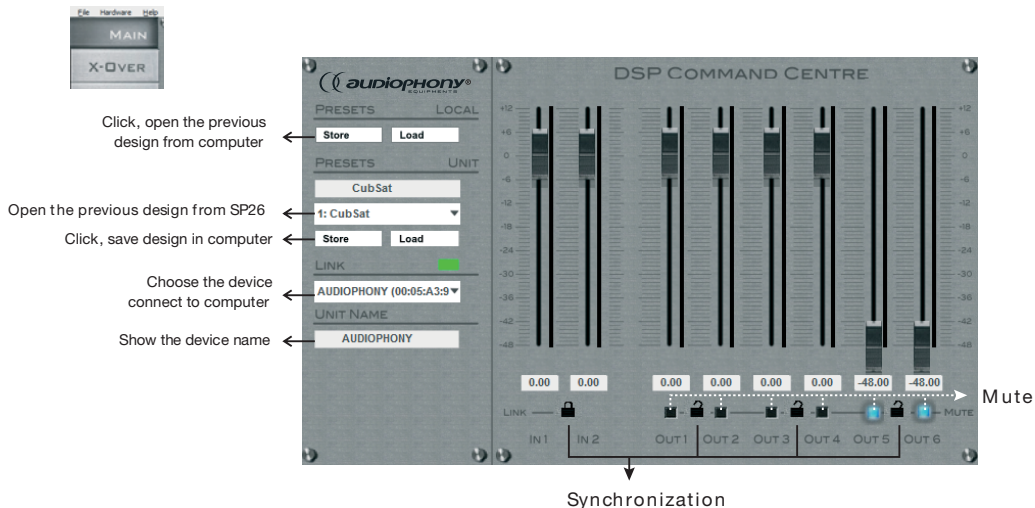
In the start menu, select AllControl then select Uninstall AllControl uninstaller. It will uninstal the software from the system automatically .

Software interface introduction

1.Equipment state control panel



2.Main interface



Software interface introduction

3.X-OVER interface

The X-OVER interface features a central crossover graph with frequency on the x-axis (10 to 20k Hz) and gain on the y-axis (-50 to 10 dB). Six colored curves represent different frequency bands. To the right, there are six vertical sliders for 'OUTPUT LEVEL' and a 'MUTE' button. Below the graph is a 'CROSS-OVER' table with six columns, each representing a channel. Each column contains controls for frequency, filter type, gain, and delay.

Channel	1	2	3	4	5	6
HI-PASS (20-20kHz)	30Hz	30Hz	125Hz	125Hz	4.24kHz	2.53kHz
LOW-PASS (20-20kHz)	L-R 24dB	L-R 24dB	L-R 24dB	L-R 24dB	L-R 24dB	L-R 24dB
Gain (0.01-12dB)	0.00	0.00	0.00	0.00	-48.00	-48.00
Delay (0.001-5ms)	0.0ms	0.0ms	0.5ms	0.5ms	0.0ms	0.0ms

4.OUTPUT interface

The OUTPUT interface includes a 'MIXER' section with two faders, a central equalization graph, and a detailed filter table. The graph shows frequency response with various filter curves. The filter table allows for precise control over the sound source.

ON	TYPE	FREQ	Q	GAIN	ON	TYPE	FREQ	Q	GAIN
<input type="checkbox"/>	Bell	1.80kHz	6.5	0.00	<input type="checkbox"/>	Bell	640Hz	1.0	0.00
<input checked="" type="checkbox"/>	Bell	88Hz	4.3	4.81	<input type="checkbox"/>	Bell	1.28kHz	1.0	0.00
<input type="checkbox"/>	Bell	43Hz	8.5	0.03	<input type="checkbox"/>	Bell	2.56kHz	1.0	0.00
<input checked="" type="checkbox"/>	Bell	237Hz	1.0	-0.07	<input type="checkbox"/>	Bell	5.12kHz	1.0	0.00
<input type="checkbox"/>	Bell	320Hz	1.0	0.00	<input type="checkbox"/>	Bell	10.0 kHz	1.0	0.00

Start the equalization of the band or close.

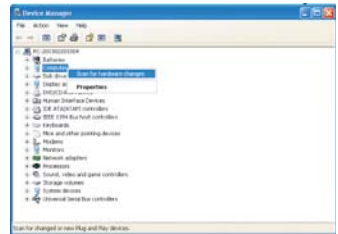
Filter Type :

- 1) Bell: bell filter secam
- 2) N otch: wave trap
- 3) Hi-shelf: high-end broom-shaped filter
- 4) Lo-shelf: low-end broom-shaped filter
- 5) All Pass: all pass filter

6 - USB driver manual installation

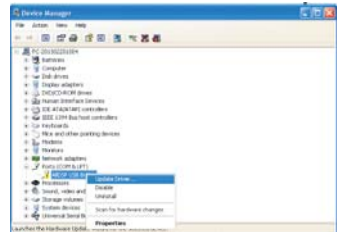
1. After setting up the PC software, connect SP26 with computer, if the computer can not recognize automatically, please right-click [Computer] in the [Device Manager], and click [Scan for hardware change]

as the right picture



2. As Pic 2 shows, exclamation mark or question mark appear. Right click the mark, click [Update Driver]

as the right picture



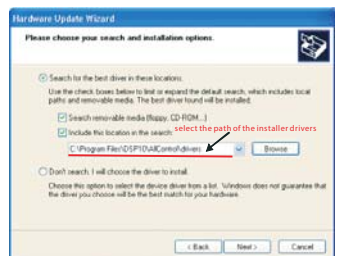
3. Hardware update wizard appears, if click [Install the software automatically], can not install, then click [Install from a list or specific location], and then click Next to continue.

as the right picture



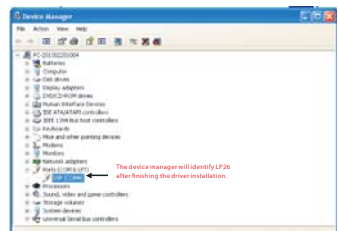
4. Tick the option [Include this location in the search] and select the path of the installer drivers in the blank. (You should select your own path if you change the default path of the installer.) And then Click [Next] to continue, if still can not search the file to install, you can click [Don't search.], choose DSP and continue to install.

as the right picture



5. The device manager will identify SP26 after finishing the driver installation. Now, the device can be connected.

as the right picture



7 - Technical data

Model	SP26
Input	Two ways Balanced Type
Output	Six ways Balanced Type
Input Impedance	> 10k ohms
Output Impedance	< 600 ohms
Output Gain	From +12dB to -50dB, 0.25dB increment
Input Gain	From +12dB to -50dB , 0.25dB increment

Other Parameters

Frequency Response (-0.3dB)	20Hz - 20kHz
THD+N	<0.05%
Max Delay	5ms
Dynamic Range	>98dB
Converts Frequency (high pass/ low pass)	20Hz - 20kHz, 1Hz increment
Centre Frequency (high pass/ low pass)	20Hz - 20kHz, 1/36 octave (19980 positions) increment
Minimum Load Impedance	600 ohms
Maximum Output Level	+9dBu (600 ohms load)
Filter Gain	From +12dB to -50dB, 0.25dB increment
High Pass & Low Pass Filter	Q value 0.2-0.25 adjustable, 0.1 increment/ 10 bands/1 filter each output channel, open and close
Frequency Response	Bessel/ Butterworth 6/12/18/24dB each octave, and Linkwitz-Riley 24dB/ octave
Protect Function	system can be set code which can prevent unauthorized person operation. Factory code : Password

Connectors

Input Section	3 cores XLR F socket
Output Section	3 cores XLR M socket
USB Connector	Square
Power Socket	3 cores ICE socket
Limiter	Threshold +9dBu to -50dBu
Start-up Time	0
Release Time	1-100
Sampling Rate	24 bits
Phase	180 phase
LCD Display	2*16 character type LCD display
Input Level Match	2*7 points, -30dB to clip
Output Level Match	6*7 points, -30dB to clip
Preset	100 computer presets/ 50 device presets
Language Options	English, Germany, Spanish, French, Dutch
Version Information	The version information of hardware, software, DSP module

Size/Weight

Product Contour Size	482x125x44.5 (1U)
Outer Packing Size	525x195x110
Total Weight	3kg
Power Consumption	< 10W
Power	AC115V/60Hz, 230V/50Hz. ±10%

8 - Notes

Because AUDIOPHONY® takes the utmost care in its products to make sure you only get the best possible quality, our products are subjects to modifications without prior notice. That is why technical specifications and the products physical configuration might differ from the illustrations.

Make sure you get the latest news and updates about the AUDIOPHONY® products on www.audiophony.com
AUDIOPHONY® is a trademark of HITMUSIC S.A.S - Zone Cahors sud - 46230 FONTANES - FRANCE