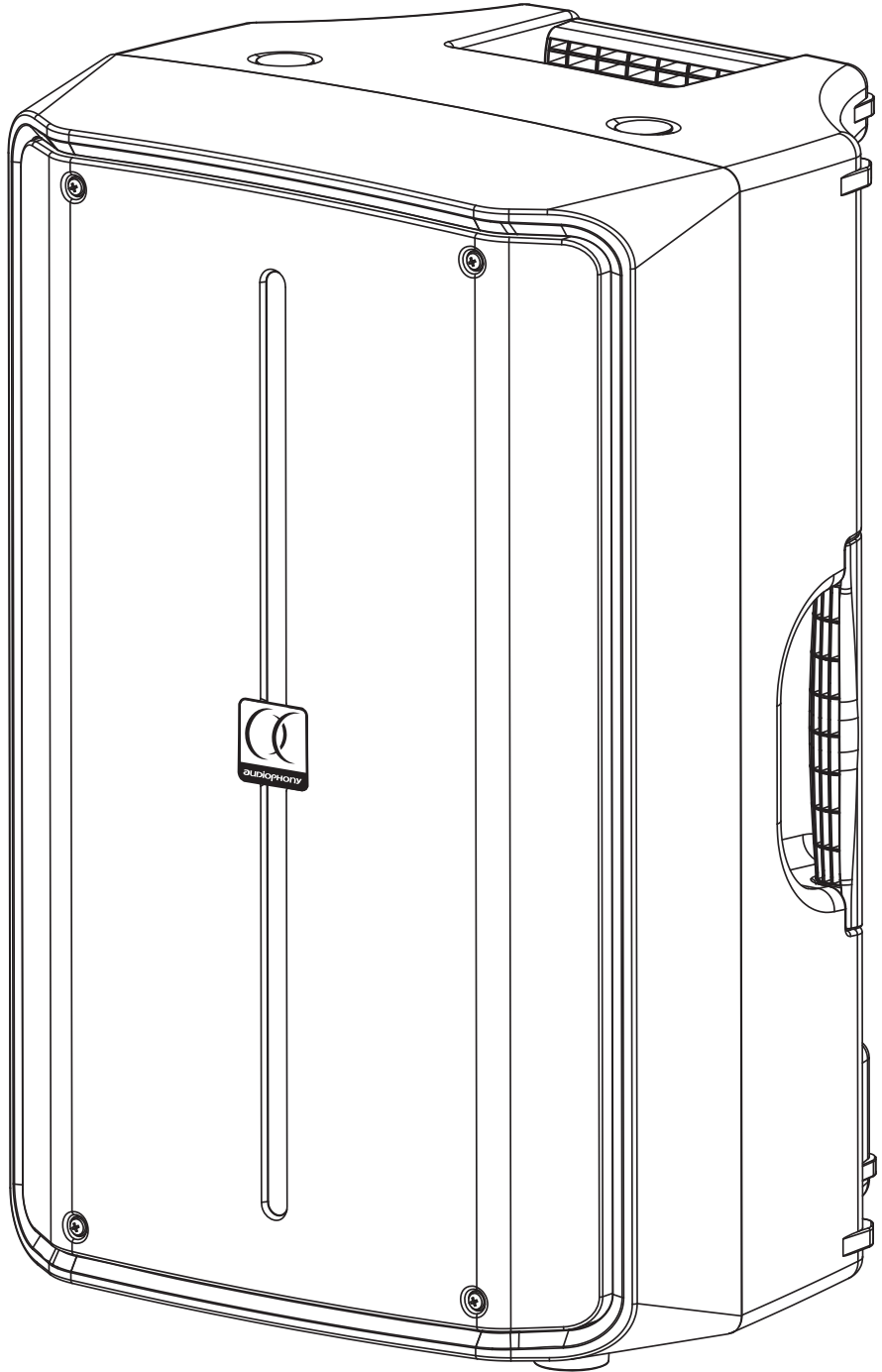
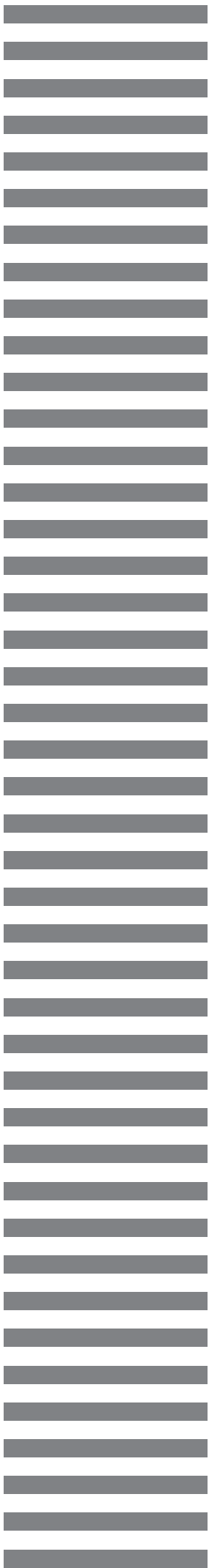


10/12/15 inches 2-way amplified speakers with bass reflex



Nova series

USER GUIDE

H11228 / H11229 / H11230 - Version 1 / 12-2020

1 - Safety information

Important safety information



This unit is intended for indoor use only. Do not use it in a wet, or extremely cold/hot locations. Failure to follow these safety instructions could result in fire, electric shock, injury, or damage to this product or other property.



This product contains non-isolated electrical components. Do not undertake any maintenance operation when it is switched on as it may result in electric shock.



Any maintenance procedure must be performed by a CONTEST authorised technical service. Basic cleaning operations must thoroughly follow our safety instructions.



CAUTION
RISK OF ELECTRIC SHOCK
DO NOT OPEN



WARNING : This unit contains no user-serviceable parts. Do not open the housing or attempt any maintenance by yourself. In the unlikely even your unit may require service, please contact your nearest dealer.
In order to avoid any electrical malfunction, please do not use any multi-socket, power cord extension or connecting system without making sure they are perfectly isolated and present no defect.



Risk of electrocution

To prevent the hazard of electric shocks, do not use extension cords, multi-socket or any other connection system without making sure metal parts completely are out of reach.



Sound levels

Our audio solutions deliver important sound pressure levels (SPL) that can be harmful to human health when exposed during long periods. Please do not stay in close proximity of operating speakers.



Recycling your device

- As HITMUSIC is really involved in the environmental cause, we only commercialise clean, ROHS compliant products.
- When this product reaches its end of life, take it to a collection point designated by local authorities. The separate collection and recycling of your product at the time of disposal will help conserve natural resources and ensure that it is recycled in a manner that protects human health and the environment.

Symbols used



This symbol signals an important safety precaution.



The CAUTION symbol signals a risk of product deterioration.



The WARNING symbol signals a risk to the user's physical integrity. The product may also be damaged.

Instructions and recommendations

1 - Please read carefully :

We strongly recommend to read carefully and understand the safety instructions before attempting to operate this unit.

2 - Please keep this manual :

We strongly recommend to keep this manual with the unit for future reference.

3 - Operate carefully this product :

We strongly recommend to take into consideration every safety instruction.

4 - Follow the instructions:

Please carefully follow each safety instruction to avoid any physical harm or property damage.

5 - Avoid water and wet locations :

Do not use this product in rain, or near washbasins or other wet locations.

6 - Installation :



We strongly encourage you to only use a fixation system or support recommended by the manufacturer or supplied with this product. Carefully follow the installation instructions and use the adequate tools.

Always ensure this unit is firmly fixed to avoid vibration and slipping while operating as it may result in physical injury.

7 - Ceiling or wall installation :

Please contact your local dealer before attempting any ceiling or wall installation.

8 - Ventilation :



The cooling vents ensure a safe use of this product, and avoid any overheating risk.

Do not obstruct or cover these vents as it may result in overheating and potential physical injury or product damage. This product should never be operated in a closed non-ventilated area such as a flight case or a rack, unless cooling vents are provided for the purpose .

9 - Heat exposure :

Sustained contact or proximity with warm surfaces may cause overheating and product damages. Please keep this product away from any heat source such as a heaters, amplifiers, hot plates, etc...

10 - Electric power supply :

This product can only be operated according to a very specific voltage. These information are specified on the label located at the rear of the product.

11 - Power cords protection:



Power-supply cords should be routed so that they are not likely to be walked on or pinched by items placed upon or against them, paying particular attention to cords at lugs, convenience receptacles and the point where they exit from the fixture.

12 - Cleaning precautions :



Unplug the product before attempting any cleaning operation. This product should be cleaned only with accessories recommended by the manufacturer. Use a damp cloth to clean the surface. Do not wash this product.

13 - Long periods of non use :

Disconnect the unit's main power during long periods of non use.

14 - Liquids or objects penetration :

Do not let any object penetrate this product as it may result in electric shock or fire.

Never spill any liquid on this product as it may infiltrate the electronic components and result in electric shock or fire.

15 - This product should be serviced when :



Please contact the qualified service personnel if :

- The power cord or the plug has been damaged.
- Objects have fallen or liquid has been spilled into the appliance.
- The appliance has been exposed to rain or water.
- The product does not appear to operate normally.
- The product has been damaged.

16 - Inspection/maintenance :



Please do not attempt any inspection or maintenance by yourself. Refer all servicing to qualified personnel.

17 - Operating environment :



Ambient temperature and humidity: +5 - +35°C, relative humidity must be less than 85% (when cooling vents are not obstructed).

Do not operate this product in a non-ventilated, very humid or warm place.

2 - Introduction

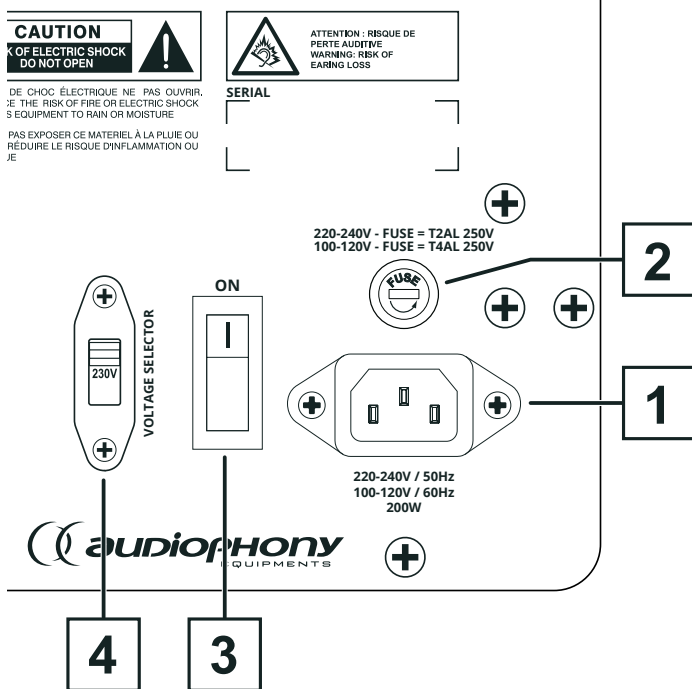
The NOVA-10A, NOVA-12A and NOVA-15A speakers are the ideal solutions for live performances. They deliver an astonishing power of 200W for the NOVA-10A, 350W for the NOVA-12A and 350W for the NOVA-15A. This powerful output is perfectly clear, warm and deep, adapted to vocal, live or recorded sessions. They are easy to install, light and compact: that's the best you can find for nomad installations without any compromise on quality, power or possibilities.

3 - Technical specifications and features

	NOVA-10A	NOVA-12A	NOVA-15A
Bi-amplification	150W RMS Class D for LF 50W RMS Class AB for HF	300W RMS Class D for LF 50W RMS Class AB for HF	300W RMS Class D for LF 50W RMS Class AB for HF
Total power output	200W RMS / 800W dynamic	350W RMS / 1400W dynamic	350W RMS / 1400W dynamic
Frequency response	60 Hz - 20 KHz	55 Hz - 20 KHz	50 Hz - 20 KHz
Power supply unit	SMPS		
H x V Dispersion	120° x 60°		
Sound Pressure Level	120 dB max.	121 dB max.	122 dB max.
Woofers	10" 2" coil 4 Ohms - 170W RMS	12" 2" coil 4 Ohms - 350W RMS	15" 3" coil 4 Ohms - 350W RMS
Tweeter	1" driver 8 Ohms 50 W RMS	1" driver 8 Ohms 50 W RMS	
Inputs	2 XLR and JACK MIC/LINE inputs 1 mini Jack AUX input and BLUETOOTH + TWS		
Output	1 XLR line output		
Settings	Volume settings for each zone HIGH/LOW +/- 12 dB main volume settings		
DSP	4 presets available: Standard, Vocal Boost, Live, Stage monitor		
Protection	Short-circuit, thermal and limiter		
Housing and fixation system	2 monitor-specific angles 1 top handle and 2 side handles 2 M8 rigging points (below) 2 M8 rigging points (on top) 36mm mounting plate for a speaker stand	2 monitor-specific angles 1 top handle and 2 side handles 2 M10 rigging points (below) 2 M10 rigging points (on top) 36mm mounting plate for a speaker stand	2 monitor-specific angles 1 top handle and 2 side handles 2 M10 rigging points (below) 2 M10 rigging points (on top) 1 M10 rigging points (rear) 36mm mounting plate for a speaker stand
Dimensions	320 x 287 x 505 mm	385 x 345 x 595 mm	460 x 415 x 705 mm
Net weight	10,85 Kg	15,80 Kg	21.35 Kg

4 - Presentation of the unit

Power supply zone



1 Power input

Allows you to connect the speaker to an electrical outlet. Use the supplied IEC cord, and make sure the voltage delivered by the outlet is in adequation with the value indicated by the voltage selector before turning on the built-in amplifier.

2 Fuse

Protects the power supply module and the built-in amplifier.

If need to replace the fuse, please make sure the new fuse has exactly the same characteristics.

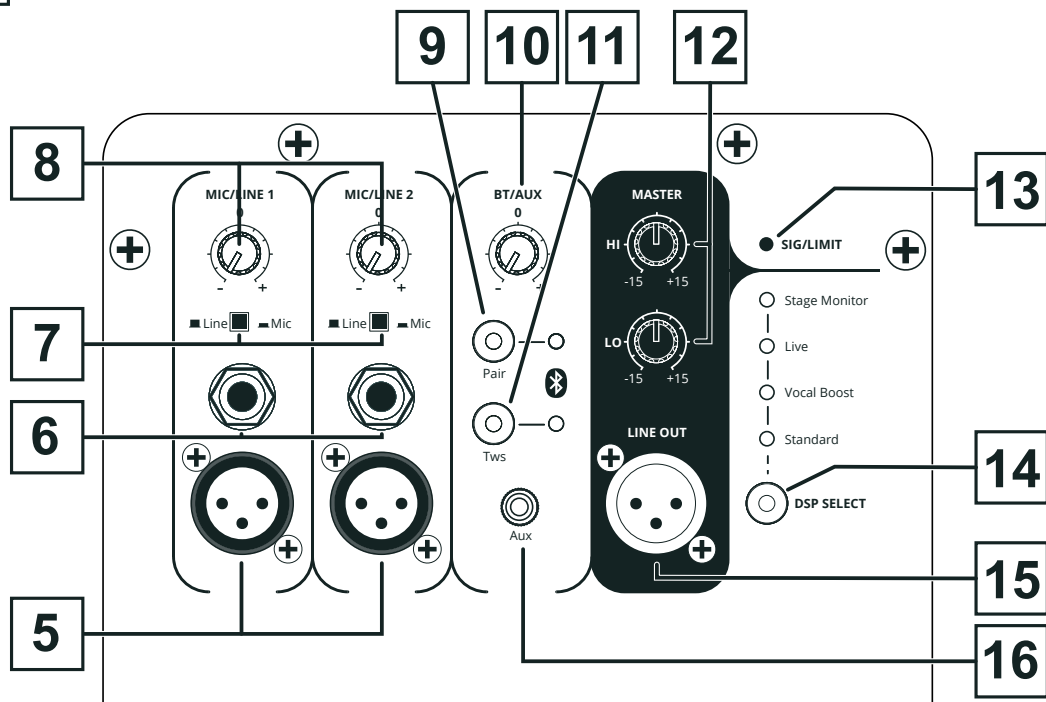
3 Power switch

Allows you to turn ON/OFF the amplifier.

4 Voltage selector

Allows you to adapt the voltage of the amplifier to the voltage of the electrical outlet.

Control panel



5 MIC/LINE input via XLR connector

This line level input is balanced. Please refer to the following chapters for more details about the different wiring.

6 MIC/LINE input via Jack connector

This line level input is balanced. Please refer to the following chapters for more details about the different wiring.

7 LINE/MIC selector

Allows you to adapt the incoming impedance to the type of input signal.

When pressed, the input level is adapted to microphone signals, otherwise it is adapted to line level signals.

8 MIC/LINE fader

Allows you to configure the MIC or LINE input level. Please make sure the SIG/CLIP LED is not lit for long periods to ensure an optimal sound quality.

9 PAIR button

This key is used to pair a Bluetooth source to the speaker.

To pair your Bluetooth device, press and hold the PAIR button for more than 3 seconds, the LED flashes.

On your device search for a device named Bluetooth and then connect it. The LED stays on continuously, the speaker is now connected.

10 BT/AUX fader

Allows you to configure the BT or AUX input level.

Please make sure the SIG/CLIP LED is not lit for long periods to ensure an optimal sound quality.

11 TWS button

The TWS function allows you to pair 2 speakers together to broadcast the Bluetooth signal in stereo.

To pair two speakers with each other, press the TWS key for more than 3 seconds, the LED flashes. Do the same on the other speaker until the LEDs stay on.

12 Equalization zone

These two faders allow you to adjust the bass and treble settings from -15dB to +15dB.

These adjustments affect the MASTER part of the signal.

13 LED SIG/CLIP

This LED has two functions:

- It lights in yellow when a signal is detected on one of the two inputs.

- It lights in red when the sum of each signal levels exceeds 0dB.

Please make sure the SIG/CLIP LED is not lit for long periods to ensure an optimal sound quality.

14 DSP button

This key is used to toggle between preset audio modes.

15 XLR LINE OUT socket

Allows you to retrieve the sum of each incoming signal and transmit it to another amplified speaker, mixing desk, or speaker/amplifier system.

16 AUX input

Line level input via Jack 3.5;

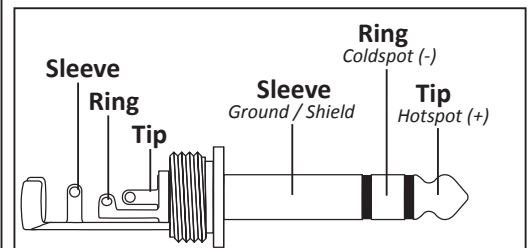
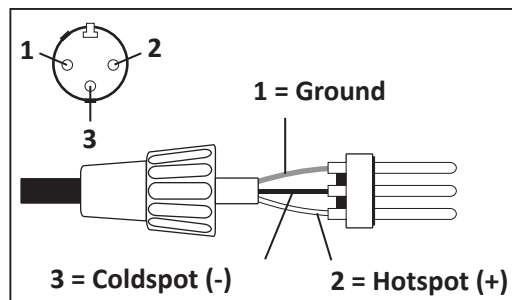
Allows you to retrieve the signal of, for instance, an MP3 player.

5 - Connectors

5.1 - Balanced

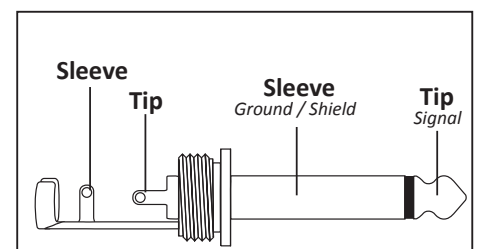
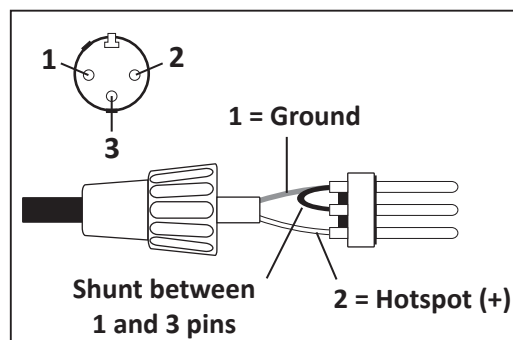
The COMBO sockets are symmetrical. This type of connectors allows you to transmit a signal over long runs of cables without altering its quality, that is why we recommend to use symmetrical signals.

The figures opposite describe the balanced wiring of the XLR or Jack 6.35 plugs.



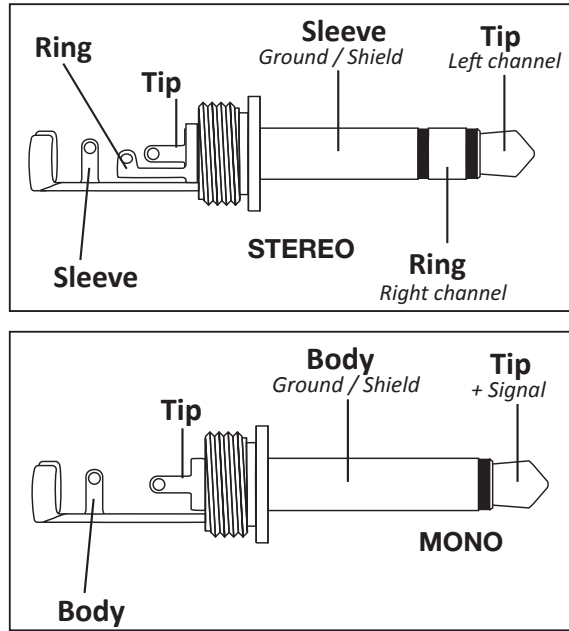
5.2 - Unbalanced

If you do not have any source with symmetrical signal, please do not use cables longer than 1.5 m. The figures opposite describe the unbalanced wiring of the XLR or Jack 6.35 plugs.

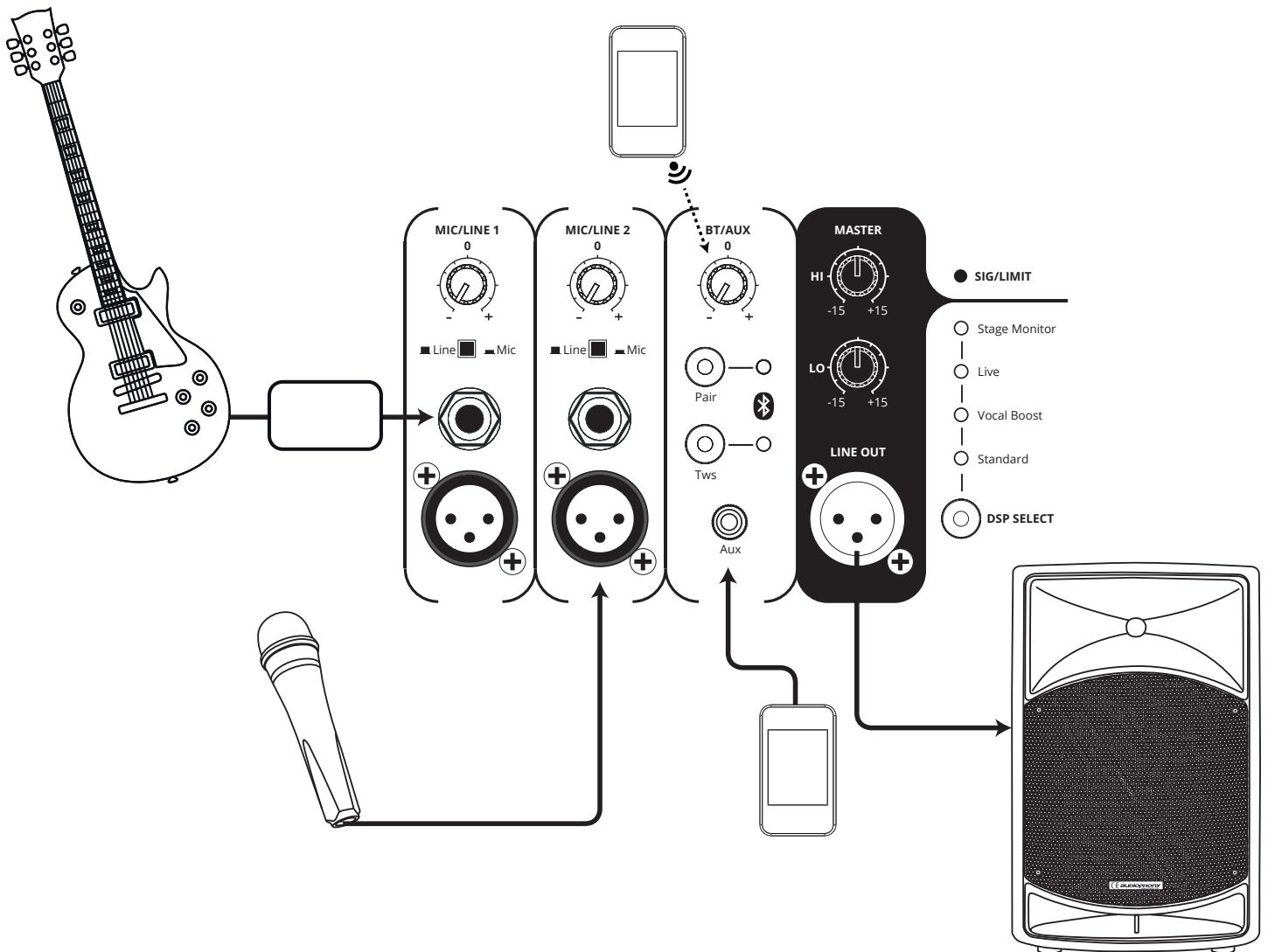


5.3 - AUX input

The AUX input is a stereo Jack 6.35 socket. It is wired as indicated by the drawing oppositex. This input also allows you to transmit a mono signal.



6 - Block diagram



Because AUDIOPHONY® takes the utmost care in its products to make sure you only get the best possible quality, our products are subjects to modifications without prior notice. That is why technical specifications and the products physical configuration might differ from the illustrations.

Make sure you get the latest news and updates about the AUDIOPHONY® products on www.audiophony.com
AUDIOPHONY® is a trademark of HITMUSIC S.A. - Zone Cahors sud - 46230 FONTANES - FRANCE